

**ITEM 33. PARKING – NO STOPPING EASTERN DISTRIBUTOR EMERGENCY
VEHICLES EXCEPTED – LINK ROAD ZETLAND**

TRIM RECORD NO: 2017/191947

RECOMMENDATION

It is recommended that the Committee endorse the reallocation of parking on the western side of Link Road, Zetland between the points 85 metres and 110 metres (four car spaces) north of Epsom Road, as “No Stopping Eastern Distributor Emergency Vehicles Excepted”.

VOTING MEMBERS FOR THIS ITEM

<i>Voting Members</i>	<i>Support</i>	<i>Object</i>
City of Sydney		
Roads and Maritime Services		
NSW Police – Redfern LAC		
Representative for the Member for Heffron		

DECISION

BACKGROUND

Transurban who manage the operation of the Eastern Distributor motorway has requested consideration of “No Stopping Emergency Vehicles Excepted” on Link Road to allow a temporary dedicated parking area for its motorway emergency response vehicles.

COMMENTS

The kerb space on the western side of Link Road, Zetland north of Epsom Road is currently signposted as “No Stopping”.

On-site inspection shows there is a need to provide a dedicated parking area close to the Eastern Distributor motorway for the motorway emergency response vehicles. This will enable the emergency response vehicles to respond efficiently to incidents on the northbound carriageway of the motorway.

The provision of this parking area will not impact capacity on Link Road or visibility at the adjacent driveways.

The parking spaces are provided on a temporary basis while Transurban looks at establishing off-street facilities for emergency response vehicles nearby.

CONSULTATION

Consultation was not required for the proposal as it is temporary arrangement and does not involve the removal of any existing kerb side parking spaces.

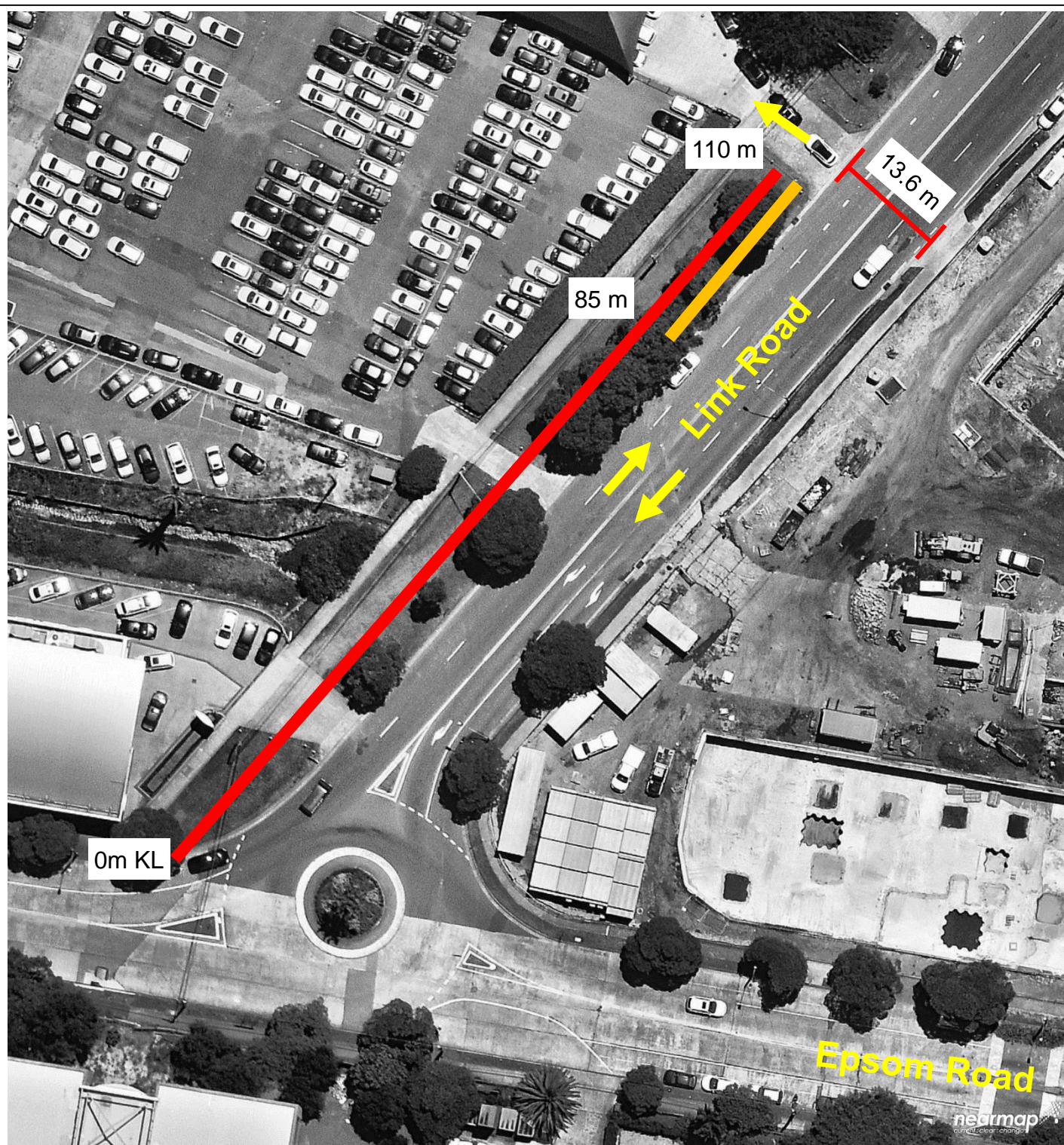
FINANCIAL

Funds are available in the current budget.

ATTACHMENTS

Parking – No Stopping Eastern Distributor Emergency Vehicles Excepted – Link Road
Zetland

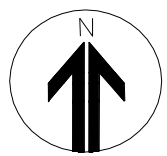
Ganesh Vengadasalam, Senior Traffic Engineer



Existing
No Stopping



Proposed
No Stopping
Eastern Distributor Emergency
Vehicles Excepted



Proposal

No Stopping Eastern Distributor Emergency Vehicles Excepted
Link Road, Zetland



